

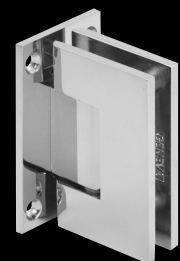
surrounds by SIGCO™

Custom frameless showers provide the finishing touch to your bathroom's design, adding function and allure to reflect your personal style. The combination of high quality fabricated heavy glass and superior shower hardware creates a secure enclosure that will last for years. With countless design options you can create a shower that is truly unique.



hardware

GENEVA



WALL MOUNT
FULL BACK PLATE

PINNACLE



WALL MOUNT
FULL BACK PLATE

PRIMA



TOP OR BOTTOM
MOUNT

hinges

Although there are many hinges to choose from, there are three primary ways to hinge your shower door: glass to wall; glass to glass; or top and bottom pivots.



"D" STYLE
HANDLE



CRESCENT STYLE
HANDLE



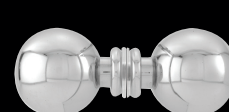
VICTORIAN STYLE
HANDLE

handles

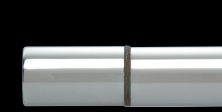
A variety of handles are available in traditional and contemporary styles and finishes.



TRADITIONAL STYLE
KNOBS



BALL STYLE
KNOBS



CYLINDER STYLE
PULL

knobs & pulls

A variety of knobs and pulls are available.



BACK TO BACK
TOWEL BARS

TOWEL BAR / "D" PULL
COMBINATION

towel bars

Towel bars or combinations of towel bars and pulls are available in traditional and contemporary styles and finishes.



CHROME



BRUSHED
NICKEL



BRASS



OIL RUBBED
BRONZE



BRUSHED
BRONZE

finishes

We offer an assortment of finishes to best complement your decor. Our most popular choices are shown here.

SIGCO™ | 48 SPILLER DR., WESTBROOK, ME 04092 | sigcoinc.com

surrounds by SIGCO™





door & dogleg

Showers with a seat or a knee wall are ideal for a door with a smaller or notched side panel.



door

For an opening less than 36" wide, a single door is a popular option. There are no additional panels. This enclosure can be built using either wall mount or pivot hinges, and the door may be hinged on the left or right.



Low Iron



Rain



Acid Etched



configurations

door & panel

Openings wider than 36" may require a stationary panel alongside the door. Depending on the size of the opening, there may be a panel on one or both sides of the door. Based on the configuration, hinging may be wall-to-glass or glass-to-glass.



neo-corner

Enclosures where panels do not meet at a 90 degree angle are called neo-corners. They are usually corner enclosures, and require head support for mechanical strength.

glass types

Clear

There are several glass options available for your custom enclosure. Our standard clear glass, available in 3/8" and 1/2", is a popular choice for those seeking a classic appearance.

Low Iron

Low Iron glass, also available in 3/8" and 1/2", has a low iron content which decreases the green tint characteristic of standard clear glass. This allows more light to pass through the glass, displaying the true color of your shower.

Acid Etched & Rain

We offer two obscure glass options, acid etch and Rain, that provide alternatives to clear glass. Acid etched offers a consistent satin frosted look allowing light to pass through while obscuring what is behind the glass. Rain glass has a raised pattern that offers texture and privacy to an enclosure.

Low Maintenance

Our standard low maintenance glass has a permanent factory applied coating that helps keep your shower glass clean while preventing water and mineral buildup.

An alternate low maintenance product has a polymeric coating that is applied to the glass after it has been fabricated and tempered. It can be utilized on almost any type of glass including our obscure glasses.



CLEAR



LOW IRON



ACID ETCHED